

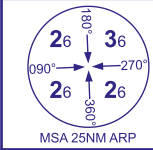
INSTRUMENT APPROACH CHART - ICAO

ISLAY

RNP

RWY 30

(ACFT CAT A,B,C)



AFIS 123.155

ISLAY INFORMATION

AD ELEVATION

56

THR ELEVATION

39

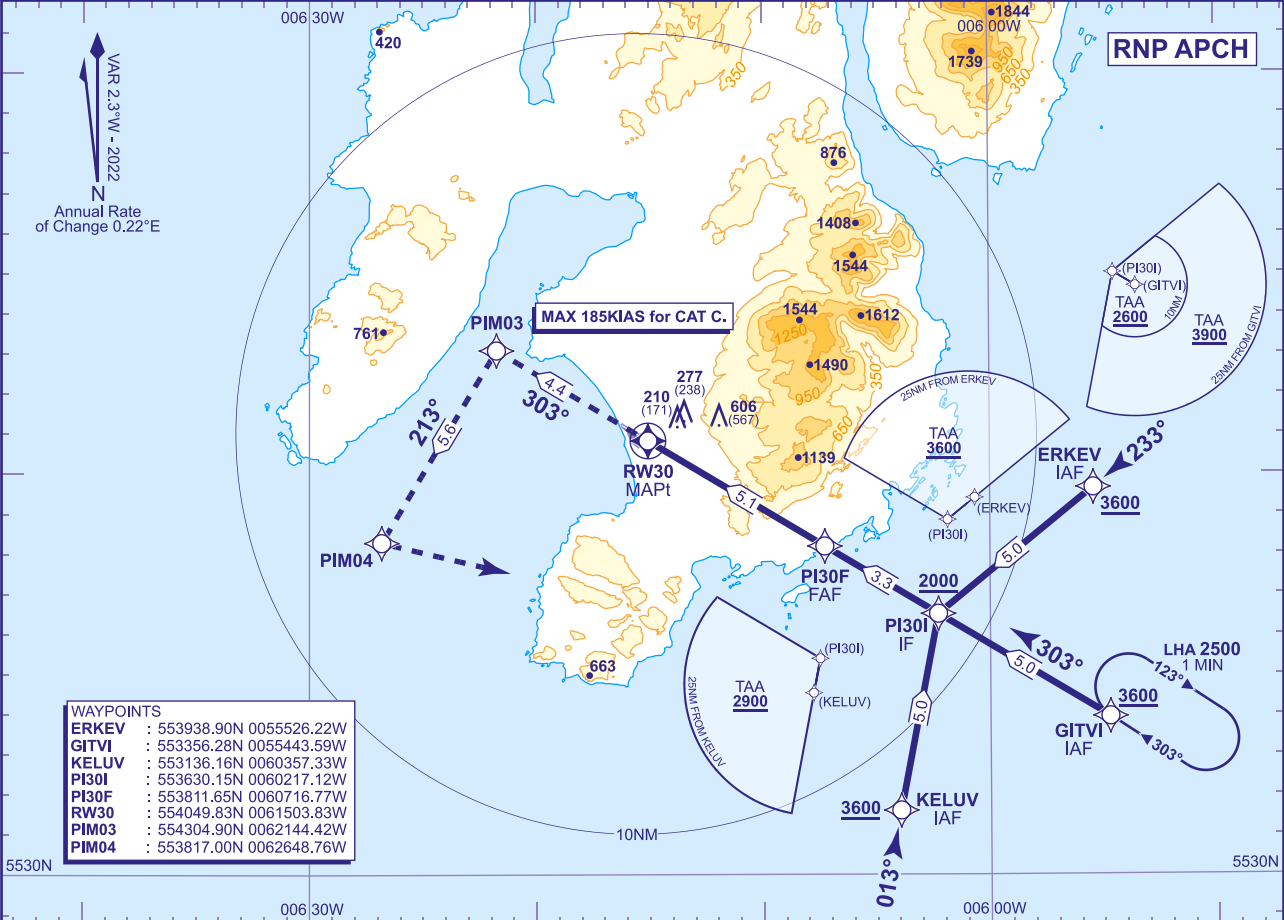
OBSTACLE ELEVATION

606 AMSL
(567)(ABOVE THR)

BEARINGS ARE MAGNETIC

TRANSITION ALTITUDE

3000



WAYPOINTS

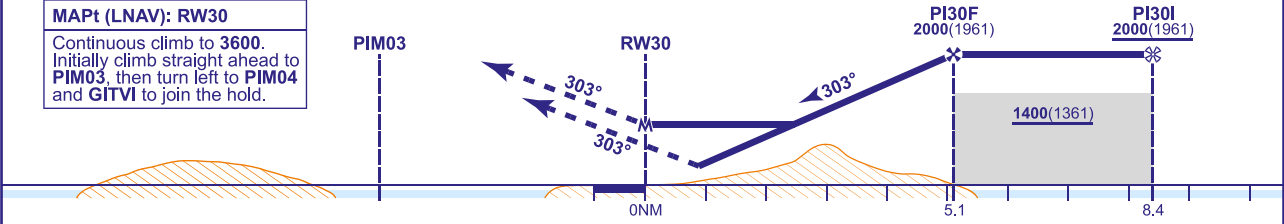
ERKEV	: 553938.90N 0055526.22W
GITVI	: 553356.28N 0055443.59W
KELUV	: 553136.16N 0060357.33W
PI30I	: 553630.15N 0060217.12W
PI30F	: 553811.65N 0060716.77W
RW30	: 554049.83N 0061503.83W
PIM03	: 554304.90N 0062144.42W
PIM04	: 553817.00N 0062648.76W

RECOMMENDED PROFILE Gradient 6.12%, 372FT/NM

NM to RW30	5	4	3	2	1
ALT(HGT)	1950(1911)	1580(1541)	1200(1161)	830(791)	460(421)

TCH 50

MAPt (LNAV): RW30
Continuous climb to 3600.
Initially climb straight ahead to PIM03, then turn left to PIM04 and GITVI to join the hold.



Aircraft Category		A	B	C	Rate of descent	G/S KT	160	140	120	100	80
OCA (OCH)	LNAV	1000(961)	1000(961)	1000(961)		FT/MIN	990	870	740	620	500
VM(C)OCA (OCH AAL)	Total Area	1020(964)	1040(984)	1830(1774)							
	150°M clockwise to 035°M	1020(964)	1020(964)	1020(964)							

- NOTE**
- 1 Use of this procedure is strictly PPR from the aerodrome operator.
 - 2 Prior to commencing the procedure, pilots are to broadcast on AFIS 123.155 with flight details and intentions.
 - 3 ATC will normally require aircraft to hold not lower than 3600.

CHANGE (2/25): SPECIFICATION CHANGE.

AERO INFO DATE 13 DEC 24

AD 2-EGPI-8-2